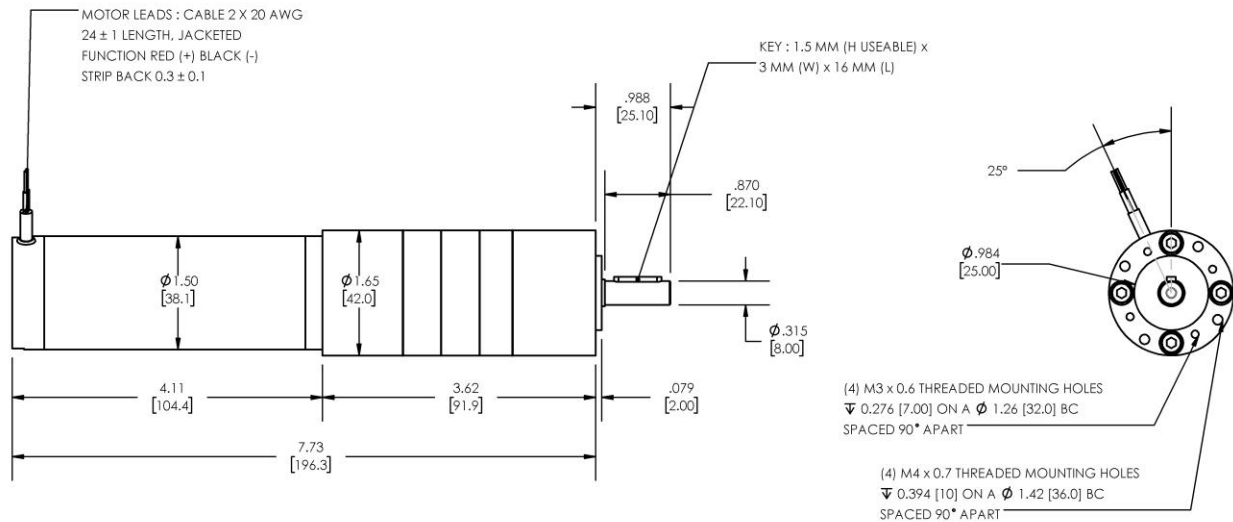


Model Number:
MMP S17-400C-24V GP42-150


DIMENSIONS ARE INCHES [MM] UNLESS OTHERWISE STATED

PLANETARY GEARMOTOR OUTPUT PARAMETERS:	VALUE	UNITS	TOLERANCE
Gearhead Ratio (exact)	149.90 : 1		
Gearhead Shaft Output Speed (at full-load)	34	RPM	MAX
Gearmotor Rated Continuous Torque	79	In-Lbs	MAX
Gearmotor Rated Peak Torque	266++	In-Lbs	----
Gearhead Standard Backlash	60	Arc Minutes	MAX
Gearhead Efficiency	70%	----	----
Output Shaft Radial Load Capacity	68	Lbs	MAX
Output Shaft Axial Load Capacity	25	Lbs	MAX
Gearmotor Total Weight	2.6	Lbs	MAX

++ All Peak Torque values are dependent upon duty. Contact our sales office for details.

DC MOTOR PERFORMANCE PARAMETERS:	VALUE	UNITS	TOLERANCE
Rated DC Voltage	24	DC VOLTS	----
Rated Continuous Current	3.06	AMPERES	----
No-Load Speed	6704	RPM	MAX
Rated Speed	5120	RPM	+/- 15%
Rated Continuous Power Out	46	WATTS	+/- 15%
Rated Continuous Torque	12	OZ-IN	----
Peak Torque (motor only)	42	OZ-IN	----
No-Load Current	0.53	AMPERES	MAX
Back EMF Constant (Ke)	3.6	V/KRPM	+/- 10%
Torque Constant (Kt)	4.9	OZ-IN/AMP	+/- 10%
DC Armature Resistance	1.86	OHMS	+/- 15%
Armature Inductance	0.25	mH	+/- 15%
Armature temperature	155	DEG. C	MAX

NOTES:

- ENCODER & BRAKE OPTIONS AVAILABLE – [FOLLOW THIS LINK FOR DETAILS](#)
- NEMA MOUNTING FLANGE OPTION AVAILABLE – [FOLLOW THIS LINK FOR DETAILS](#)

MIDWEST MOTION PRODUCTS

DESIGN, MANUFACTURING & DISTRIBUTION - MOTION CONTROL EQUIPMENT
www.midwestmotion.com

 email: sales@midwestmotion.com